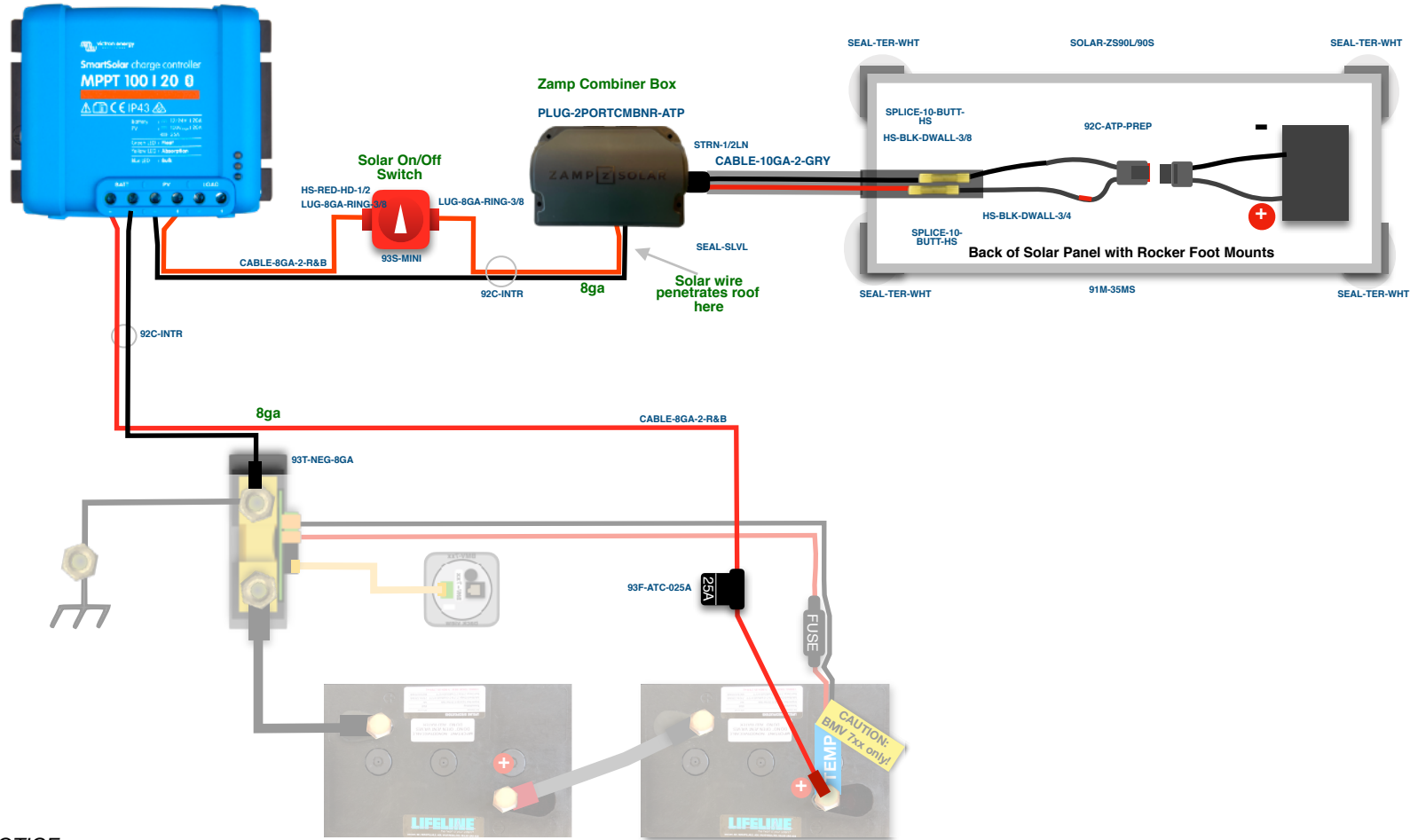




CAUTION:

There should be no continuity between the negative cable from the roof and the negative cable from the charge controller. If they connect it will fail. Keep these isolated from each other.



NOTICE:

The "greyed out" battery bank items are not included, but you will be interacting with them.



CABLE OUTPUT INSTALLATION VIDEO

1



ROCKER FOOT MOUNT INSTALLATION VIDEO

2



SOLAR PANEL INSTALLATION VIDEO

3



ROOF COMBINER BOX INSTALLATION VIDEO

4



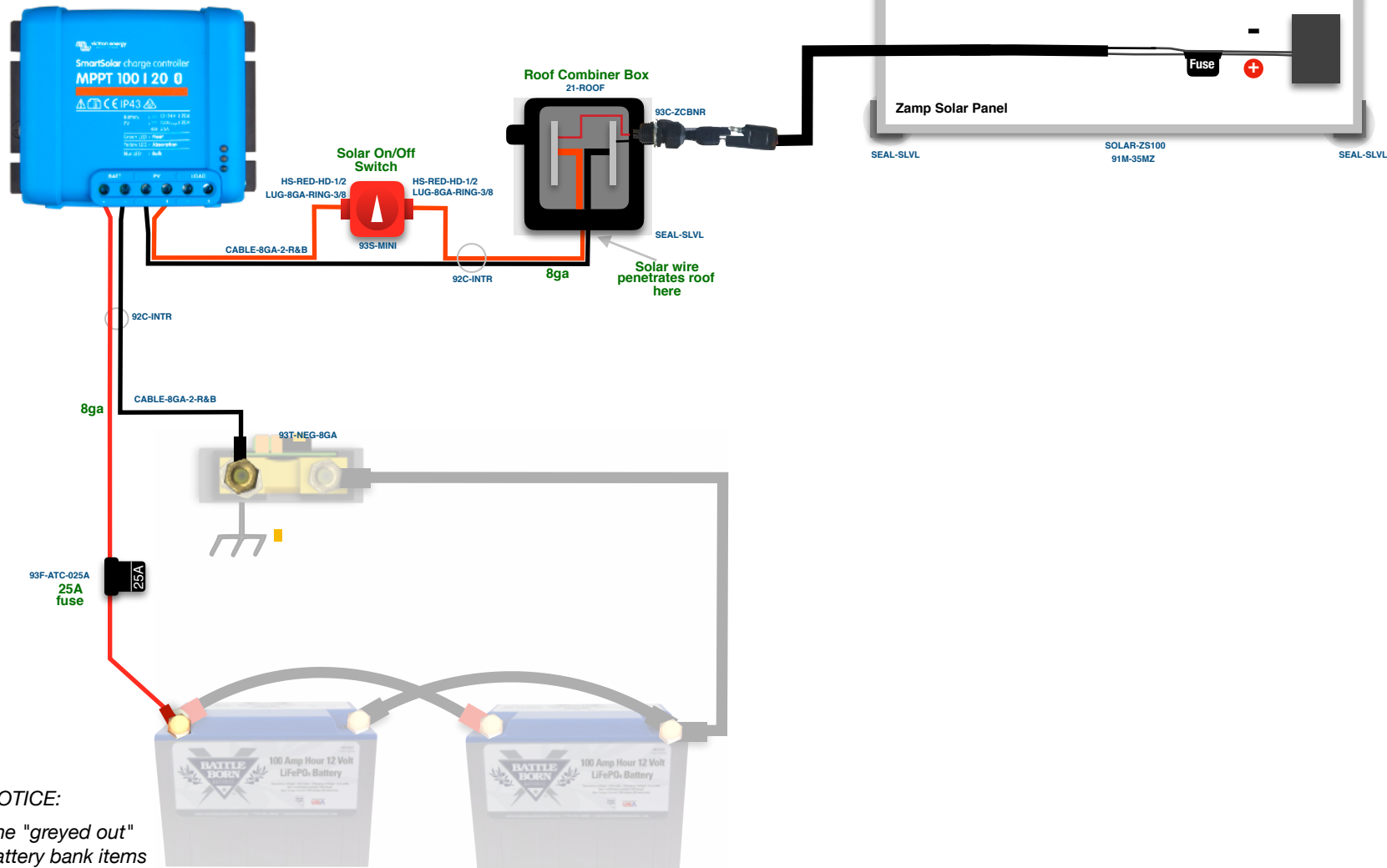
If the connections seem tight on the MPPT, that is normal. Scan here for assistance.

5



CAUTION:

There should be no continuity between the negative cable from the roof and the negative cable from the charge controller. If they connect it will fail. Keep these isolated from each other.



NOTICE:
The "greyed out" battery bank items are not included, but you will be interacting with them.



CABLE OUTPUT
INSTALLATION VIDEO

1



ROCKER FOOT MOUNT
INSTALLATION VIDEO

2



SOLAR PANEL
INSTALLATION VIDEO

3



ROOF COMBINER BOX
INSTALLATION VIDEO

4



If the connections seem tight on the MPPT, that is normal. Scan here for assistance.

5